



Jasc® Paint Shop™ Photo Album™ 4

Everything you need to enhance, organize,
and share digital photos

Adding Special Effects

This tutorial will show you how to add special effects to an image. The tutorial uses the "In the park.jpg" image located in the Samples album. The before and after images are shown below:

Before



After



You will complete the following tasks:

- Open the image In the park.jpg in the Image View window
- Opening the Special Effects dialog
- Applying a special effect to the image
- Saving the image

Add Special Effects to an Image

- 1 On the Browse tab, navigate to the samples album located in **C:\Program Files\Jasc Software Inc\Paint Shop Photo Album\Samples**.



- 2 Double-click the image **In the park.jpg** to open it in the Image View window.
- 3 Choose **Effects > Special Effects** to open the Special Effects dialog.



- 4 Click the **Edges** tab. Notice the slider in the preview window. Use this slider to view more or less of the image with the special effect. Drag the preview slider to the left.

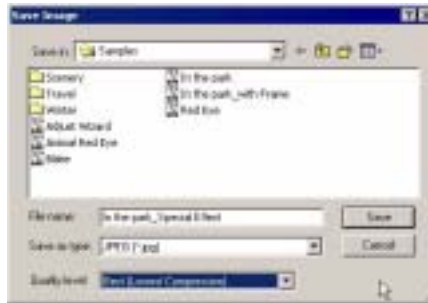


- 5 In the **Strength of Effect** field, drag the slider to 70%.

- 6 In the **Background Color Bias** field, drag the slider to one mark past Grey.



- 7 Click the **OK** button to close the Special Effects dialog.
- 8 When you save the image, the special effect will be merged into the image, so you'll want to save the image with a new file name. Click the down-arrow on the right side of the Save button and choose **Save Image As**.
- 9 In the Save Image dialog, type **In the park_Special Effect** in the File name field.
- 10 If you plan to print this image you'll want to change the compression settings to get the best possible output. Choose **Best (Lowest Compression)** from the Quality level drop-down list.



- 11 Click the **Save** button to save the image with the new file name. The image should look like this:

